

GRAINS OF SAND



BUILD VENTURES PVT. LTD.



Site Plan

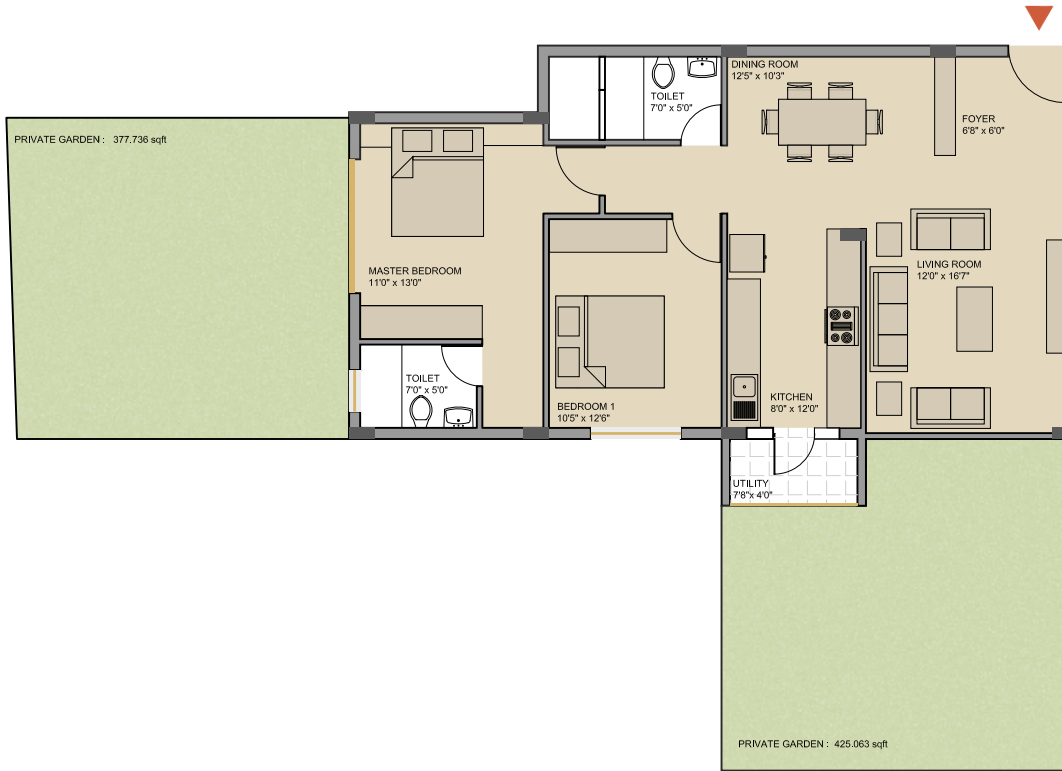






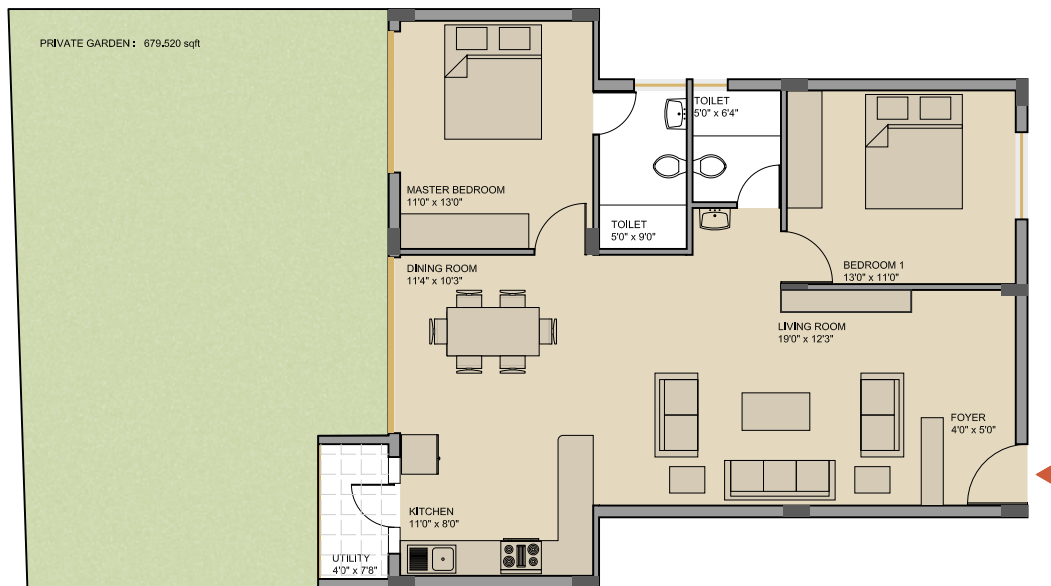
*The best things in Life are worth waiting for...
but you've waited long enough.*

*Distinctive and unique, Oxygen Build Ventures Pvt. Ltd. offers you the very best. The Spacious,
Light-Filled apartment features sophisticated, relaxing and nature-inspired decor, designed to
its perfection.*



Unit Type A
 2 BHK
 Unit No. - 001
 Area - 1252 sqft
 Private Garden - 804 sqft

C	D
B	
A	E

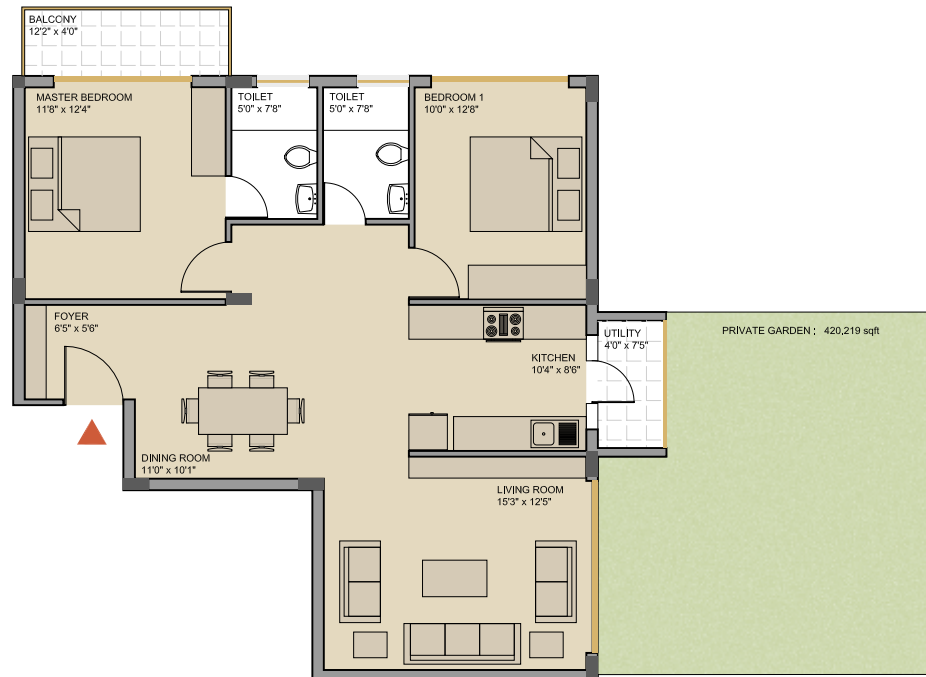


Unit Type B
 2 BHK
 Unit No. - 002
 Area - 1292 sqft
 Private Garden - 680 sqft

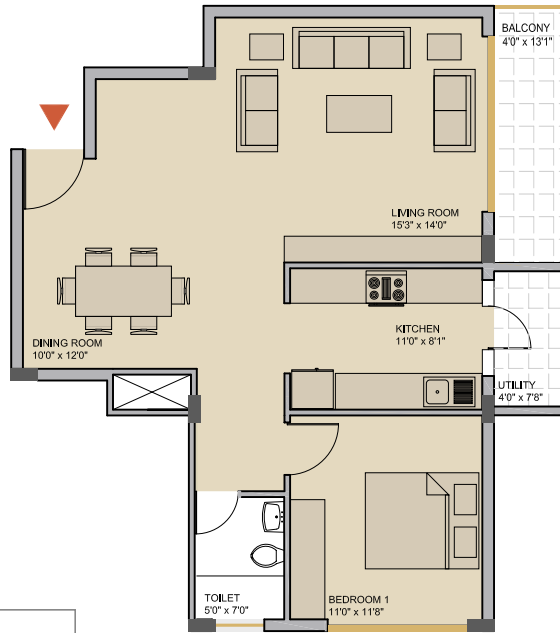


C	D
B	
A	E

Unit Type C
 2 BHK
 Unit No. - 003
 Area - 1216 sqft
 Private Garden - 200 sqft

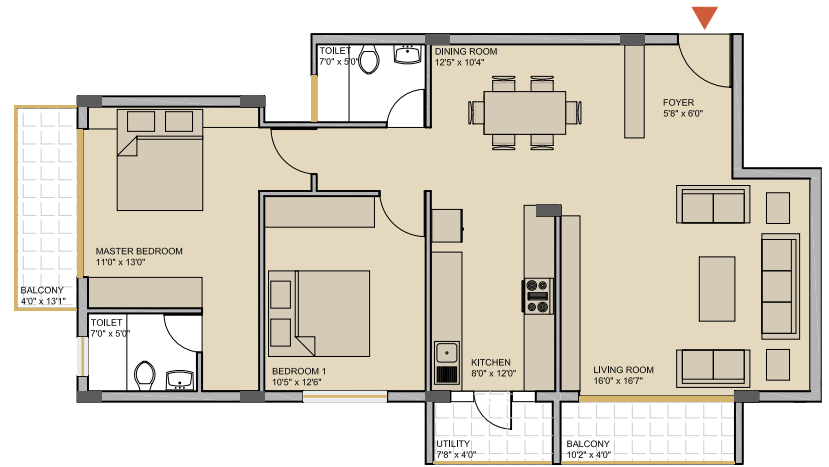


Unit Type D
 2 BHK
 Unit No. - 004
 Area - 1248 sqft
 Private Garden - 421 sqft

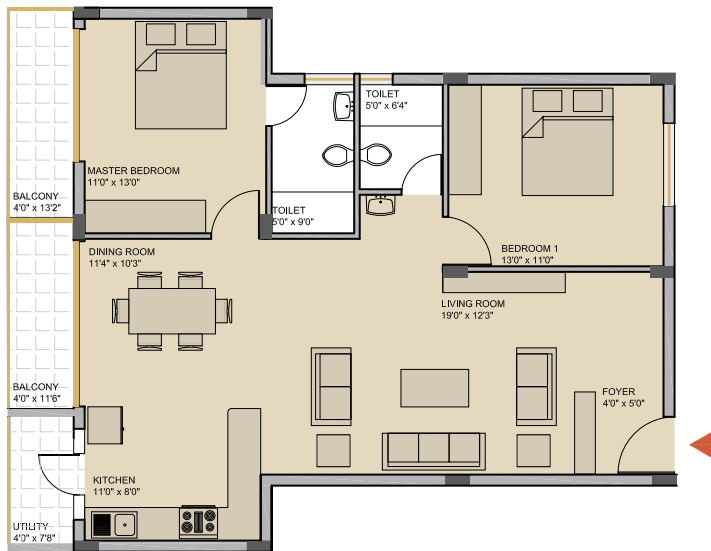


C	D
B	E
A	

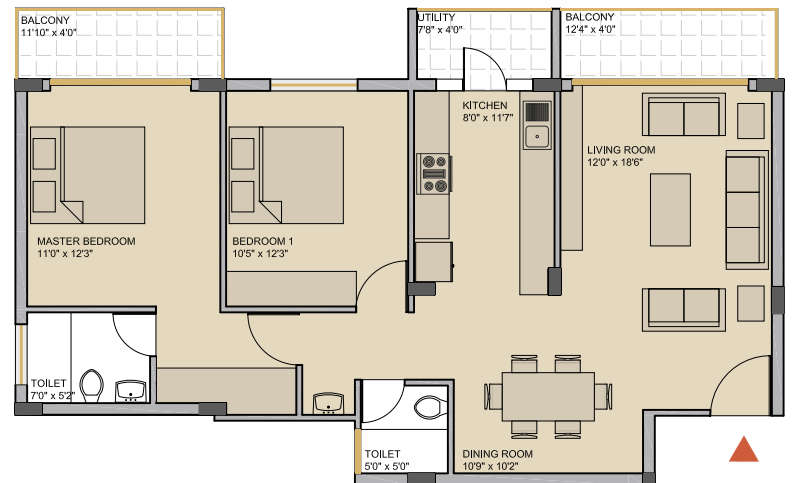
Unit Type E
1 BHK
Unit No. - 005
Area - 1023 sqft



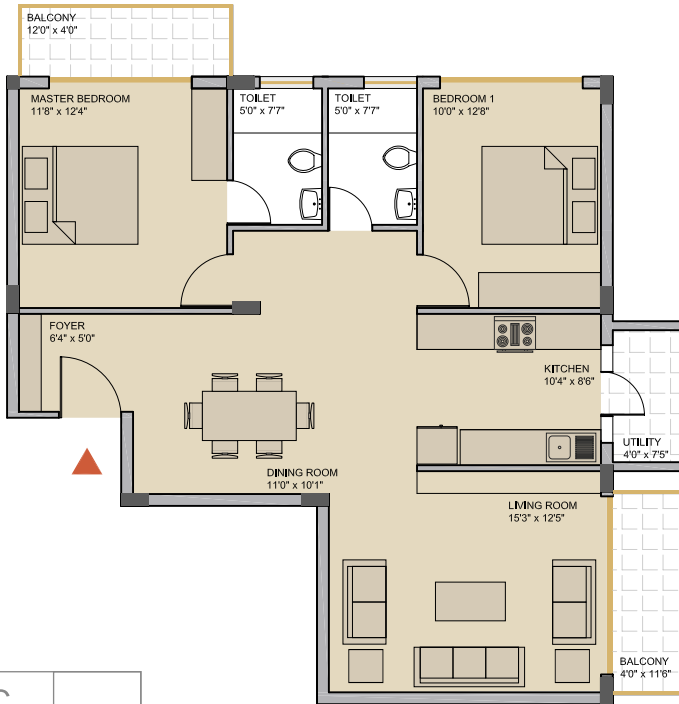
Unit Type A
2 BHK
Unit No. - 101
Area - 1418 sqft



Unit Type B
2 BHK
Unit No. - 102, 202, 302
Area - 1435 sqft

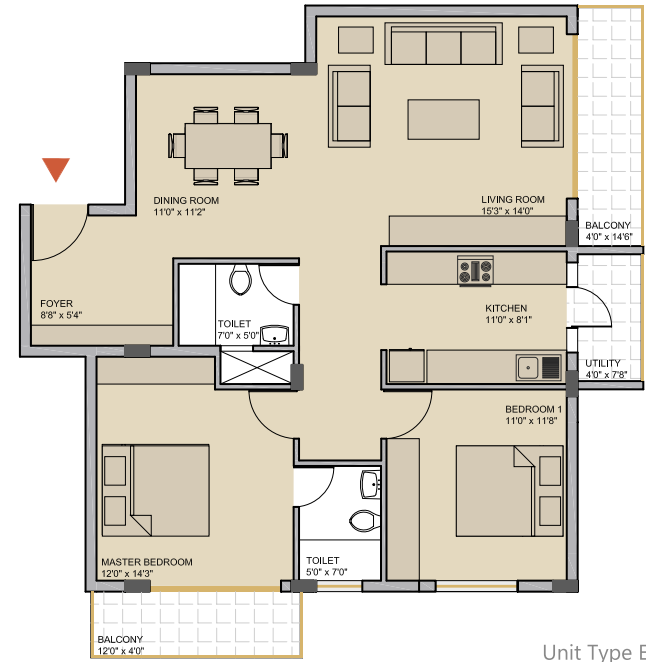


Unit Type C
2 BHK
Unit No. - 103, 203, 303
Area - 1285 sqft

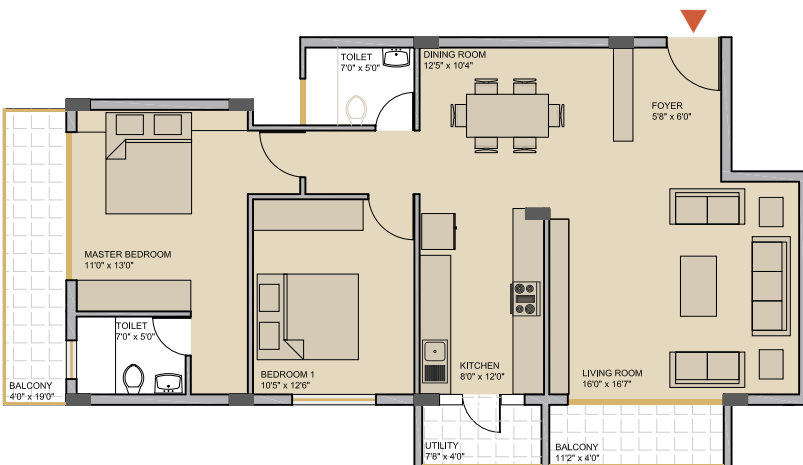


C	D
B	E
A	

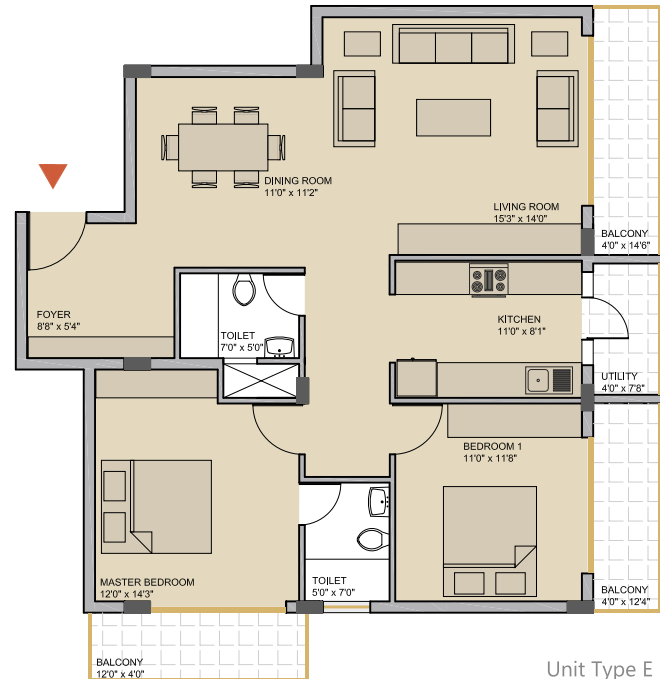
Unit Type D
2 BHK
Unit No. - 104, 204, 304
Area - 1370 sqft



Unit Type E
2 BHK
Unit No. - 105, 305
Area - 1459 sqft



Unit Type A
2 BHK
Unit No. - 201, 301
Area - 1440 sqft



Unit Type E
2 BHK
Unit No. - 205
Area - 1524 sqft

SPECIFICATIONS

STRUCTURE

RCC framed structure (Seismic Zone II), with Solid block masonry walls

DOORS

*Main door - Polished teakwood frame with teakwood shutter
other internal doors - Hardwood frame with flush shutters, enamel painted
Balcony/Sitout doors - Aluminium anodised
Toilet door - Hardwood frame with flush shutters, enamel painted*

WINDOWS

UPVC sliding windows - 3 track

VENTILATORS

UPVC with glass louvers

FLOORING

*Main & staircase lobby at ground floor - Combination of polished granite and vitrified tiles
Living and dining - Vitrified tiles
All bedrooms & kitchen - Vitrified tiles
Balconies and utilities - Anti-skid ceramic tiles
Toilets - Anti-skid ceramic tiles
Common lobbies & corridors - Combination of polished granite and vitrified tiles
Staircases - Kota stone/Sadarahalli granite*

DADO

*Kitchen - Ceramic
Toilet - Ceramic*

SKIRTING

*Main & staircase lobby at ground floor - Polished granite / vitrified tiles
Living, dining, - Vitrified tiles
All bedrooms & kitchen - Vitrified tiles
common lobbies & corridor - Polished granite / vitrified tiles
Staircases - Kota stone/Sadarahalli granite.*

TOILETS

*Chromium plated fittings of reputed make
Wash basins and EWC's of reputed make in all toilets
PVC lines for rain water, soil & waste disposal, CPVC lines for water supply*

PAINTING

*Internal walls & ceilings - Oil bound distemper
External finish - Weather proof external paint
MS grills and railings - Enamel paint*

ELECTRICAL

*2 BHK Flat - 3KW power supply & 1.0 KW DG back up
1 BHK Flat - 3KW power supply & 1.0 KW DG back up*

*100% DG back up for lifts, pumps & common area lighting
Concealed PVC conduits with copper wiring
Modular switches of reputed make
AC points - Conduits with wiring, socket and control switch for master bedroom*

SECURITY

*24 hrs round the clock security personnel
CCTV at strategic locations for security & monitoring
EPABX provision (Intercom)*

LIFT

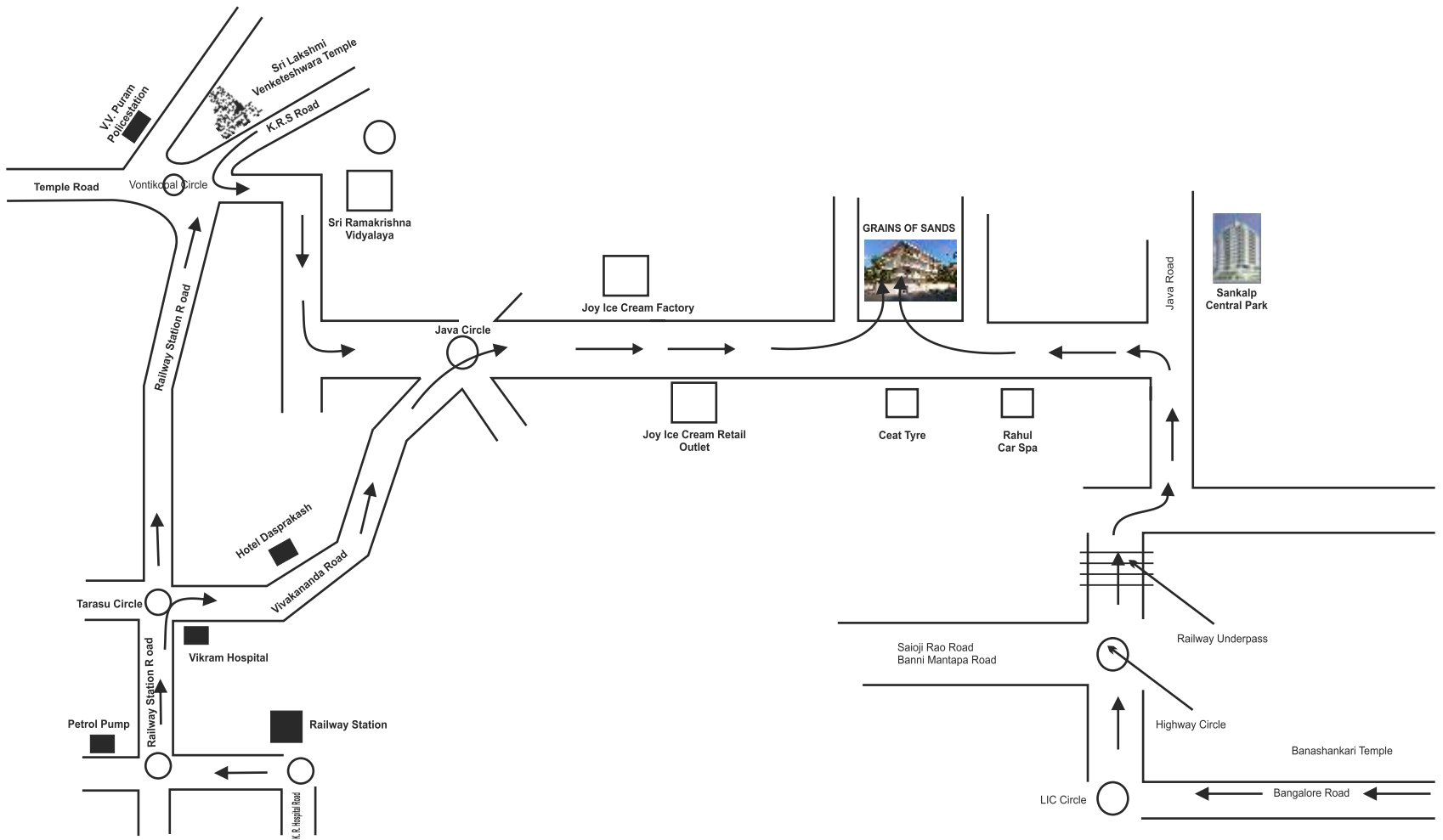
Automatic lift of 6 Pax

RAIN WATER HARVESTING SYSTEM

Will be provided as per the statutory approvals

LANDSCAPING

Soft and hard landscaping on ground levels, around entrance areas and main driveway



Site Address : No. 3W/A & 3W/B, Yadavagiri Industrial Estate, Yadavagiri, Mysore - 570020.

Oxygen's maiden venture in heritage city - Grains of Sand

To make this yours contact



BUILD VENTURES PVT. LTD.

No. 152, Hanuman Chambers, 2nd Main, 7th Cross, Chamarajpet, Bangalore - 560 018.

Cell : 9845187476, 9845485000, 9845719210

e-mail : sales@oxygendesignbuild.com